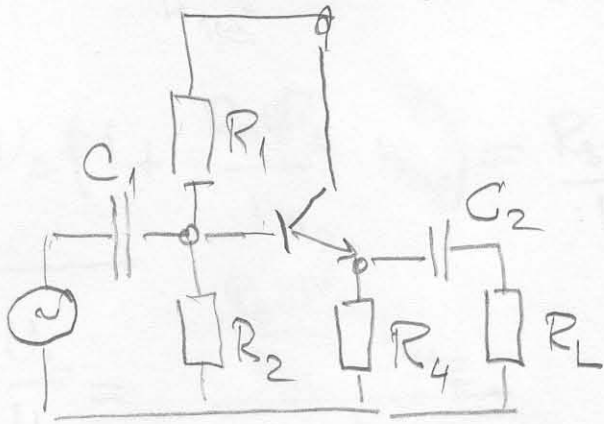


6) Tranzistor v mostikovom zapojem

$+U_{cc} = 12V$



$h_{21} = 300 ; h_{11} = h_{21} \cdot r_E$

$U_U = 6V ; I_E = 2mA$

$I_{R1}, I_{R2} > 10 \cdot I_b$

Úlohy

1.) Aké je to zapojenie

SK

2. Vypočítajte prvky obvodu

$I_b = \frac{I_E}{h_{21}} = 6,66 \mu A$

$R_4 = \frac{6V}{2mA} = 3k\Omega$

$I_{R2} = 100 \mu A$

$R_2 = \frac{6 + 0,65}{0,10 \cdot 10^{-3}} = 66,5 k\Omega$

$R_1 = \frac{U_{cc} - (U_{R4} + 0,65)}{I_{R2} + I_b} = \frac{5,35}{106,6 \cdot 10^{-6}} = 50,1 k\Omega$

3. Nakreslite signálovú schému pre stredné frekv.

